

SMS Voter 2.0 User Guide

SMS Voter 2.0 User Guide	1
SMS Voter 2.0 Overview.....	2
Setting up a Poll	2
Sending a Vote	3
Viewing Results of a Poll.....	3
Prize Draws	4
Poll Status Screen.....	4
Managing Poll Data	5
Configuring SMS Voter	5
Testing a Poll.....	6
Appendix	7
System Requirements	7
Installation.....	7
Technology Overview.....	7
Performance	8

Author: Dave Glover

Blog: <http://blogs.msdn.com/dglover>

Document Version: 1.0

Document Date: Jan 15, 2007

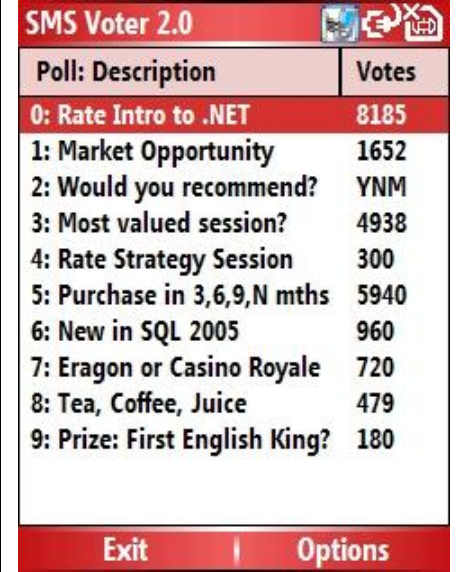
Online version of this guide: <http://blogs.msdn.com/dglover/pages/sms-voter-2-0-online-documentation.aspx>

SMS Voter 2.0 Overview

SMS Voter 2.0 is designed to manage adhoc SMS/Text based polls, collating SMS Text votes sent from any phone capable of sending Text messages. SMS Voter 2.0 itself is only supported on Microsoft Windows Mobile 5.0 (or greater) Smartphones or Pocket PC Phones. The screen shots in this guide are from SMS Voter running on a Smartphone but SMS Voter looks and behaves exactly the same on a Pocket PC Phone.

SMS Voter 2.0 supports

- 1) Collating votes sent from any phone capable of sending SMS messages
- 2) 10 Polls with their own score criteria
- 3) Polls can be independently opened or closed.
- 4) Anonymous and identifiable votes. Polls are anonymous by default, see [Setting up a Poll](#)
- 5) Three vote types: First Vote Wins, Last Vote Wins, Allow Multiple Votes
- 6) Prize Draws
- 7) Exporting poll data to Excel



Poll: Description	Votes
0: Rate Intro to .NET	8185
1: Market Opportunity	1652
2: Would you recommend?	YNM
3: Most valued session?	4938
4: Rate Strategy Session	300
5: Purchase in 3,6,9,N mths	5940
6: New in SQL 2005	960
7: Eragon or Casino Royale	720
8: Tea, Coffee, Juice	479
9: Prize: First English King?	180

Setting up a Poll

10 Polls are supported and are numbered 0 to 9. You can select a poll with the up/down cursor keys or by pressing the key on the keypad that corresponds to the poll number.

To set a poll's properties, select "Properties" from the main "Options" menu. You can set the poll's properties such as the title, vote type, anonymous settings, and poll validation rules etc...

Vote Types

- First Vote Wins – any subsequent votes from the same phone number are ignored.
- Last Vote Wins – if multiple votes are sent from the same number then only the last vote is stored.
- Allow Multiple Votes – a voter can submit as many votes as they like and they are all recorded.

Validation Rules

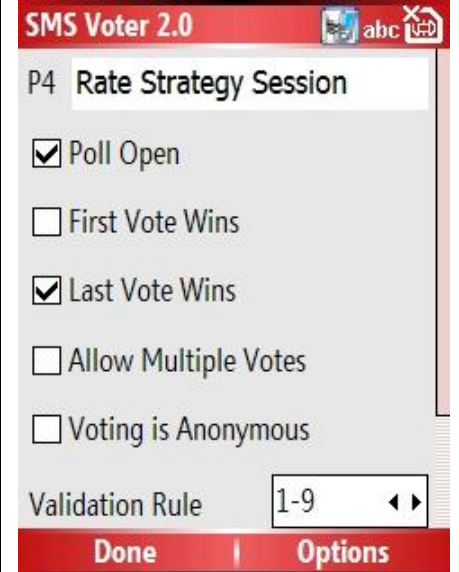
Each poll has a set of validation rules that are used to check the validity of SMS votes received. You can select a rule using the "Validation Rule" list or you can enter your own custom rule.

Custom Rules

With custom rules you can define a specific set or range of characters that will be accepted as valid scores for a poll. You can define a set of characters such as ABCXY67, 123ABC or a range of characters or numbers A-M1-5, 1-9 etc. Only numbers, letters or the hyphen character can be entered.

Validation Test

You can define a set of test characters that can be sent to this poll if you have enabled "Enable Test Buttons" from the



SMS Voter 2.0	
P4 Rate Strategy Session	
<input checked="" type="checkbox"/>	Poll Open
<input type="checkbox"/>	First Vote Wins
<input checked="" type="checkbox"/>	Last Vote Wins
<input type="checkbox"/>	Allow Multiple Votes
<input type="checkbox"/>	Voting is Anonymous
Validation Rule	1-9
Done Options	

Configuration Menu. See [Configuring SMS Voter](#)

Sending a Vote

You can send a vote to SMS Voter from any phone that can send SMS/Text messages.

The vote format is as follows:-

- The first character must be the Filter Character (if filter is enabled), by default the '?' character. See [Configuring SMS Voter](#)
- The second non-space character is the poll number
- The third non-space character is the score character in this case 9
- The rest of the message is considered to be a comment and is stored into the votes database ready to be exported to Excel.

To:
040...
Hi guys which film do you
fancy seeing? Reply
?7e for eragon
?7c for casino royale
88/160




Text Messages  123

To:
+61040

? 0 9 great session|
19/160

Viewing Results of a Poll

Select a poll with the up/down cursor keys or by pressing the corresponding key on the keypad. Then either click the phone's [Action] button or, from the "Options" menu select "Results". You'll see a summary of the votes submitted broken down by the score character and the number of votes it received.

SMS Voter 2.0   

Poll 9 Scores	Count
E	60
H	60
W	60

Refresh | Options

Prize Draws

Prize draws are only enabled for polls that are not anonymous so you need to be able to identify the person who submitted the vote. Select a poll using either the cursor keys or the keypad, then from the "Options" menu select "Prize Draw". This will select a random vote for the selected poll.

You can also do a "Prize Draw" from a subset of votes, for example you want to select a winning vote from all those who submitted the correct answer. To do this, select the poll, from the "Options" menu, select "Results" (or press the [Action] key) and then select the winning score character and then from the "Options" menu select "Prize Draw"



P9: Prize: First English King?

Total Votes: 60

Winning Vote: 49

Phone: 44768

Score: W

OK |

Poll Status Screen

The default view of SMS Voter shows the Poll Title, the number of votes received and the open/closed status of the poll. If the poll is closed then "closed is displayed", if the poll is closed after it has received votes then "C" for closed is placed after the vote count.

From the main "Options", "View By", "Status" menu you get a status summary of the all defined polls. The status column is coded as follows:-

First Character: O = Open, C = Closed

Second Character: F = First Wins, L = Last Wins, M = Multi Vote

Third Character: A = Anonymous, I = "Identifiable"

If you are viewing by "Status" then the [Action] button will open the poll's properties rather than display a poll's vote results.

SMS Voter 2.0



Poll: Description	Status
0: Rate Intro to .NET	OFA
1: Market Opportunity	OLA
2: Would you recommend?	OMA
3: Most valued session?	OLA
4: Rate Strategy Session	OLI
5: Purchase in 3,6,9,N mths	OMA
6: New in SQL 2005	OMA
7: Eragon or Casino Royale	OMA
8: Tea, Coffee, Juice	OLA
9: Prize: First English King?	OMI

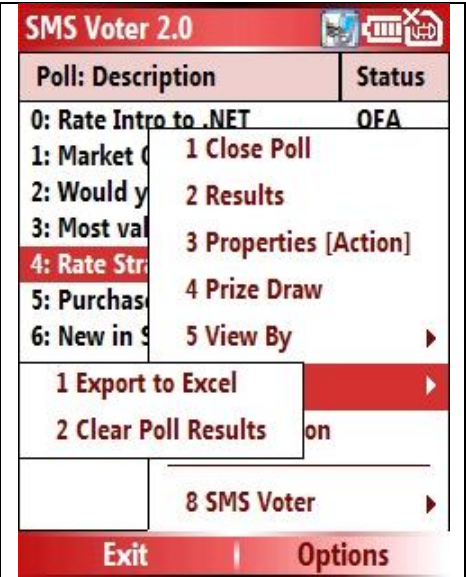
Exit |

Options

Managing Poll Data

Data from a poll can be exported to Excel or any application that can open a CSV (Comma Separated Variable) format file from the main “Options”, “Data”, “Export to Excel”.

You can clear poll data from the main “Options”, “Data”, “Clear Poll Results” menu.



Configuring SMS Voter

Setting the Filter Character

By default SMS Voter looks for any SMS messages that the phone receives that starts with a '?' and will consider it to be a possible vote. All other SMS messages that are received by the phone will appear in the “Text Messages” inbox as normal.

You can change the default “Filter Character” to something else (eg '.', '!' etc) or you can disable the vote filter altogether by un-checking the “Filter Enabled” option.

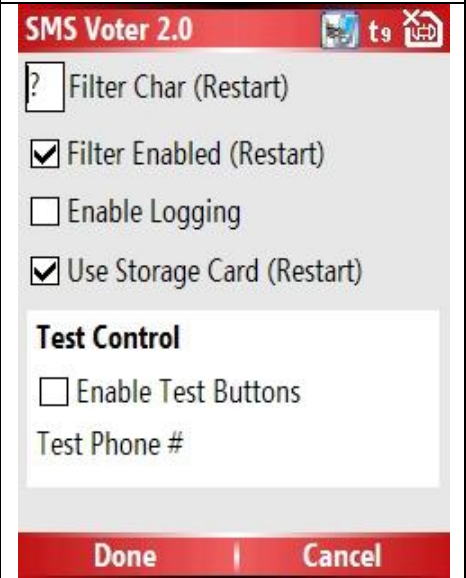
Warning. If you un-check “Filter Enabled” and SMS Voter is running, then all SMS Text messages received will be processed as possible votes even those from your nearest and dearest and you’ll never see the text!! Typically you’ll only disable the filter on a phone dedicated to processing SMS votes.

If your Smartphone or Pocket PC Phone has a storage card (highly recommended) then by default the votes will be stored in a database created in the “\Storage Card\Application Data\SMSVoter” folder. Otherwise the votes will be stored in the “\Application Data\SMSVoter” folder.

Logging

You can also log events in the SMS Voter application by checking the “Enable Logging” option. The log file will be created in the same location as the Votes database and will log all invalid SMS Text votes received.

Test Control

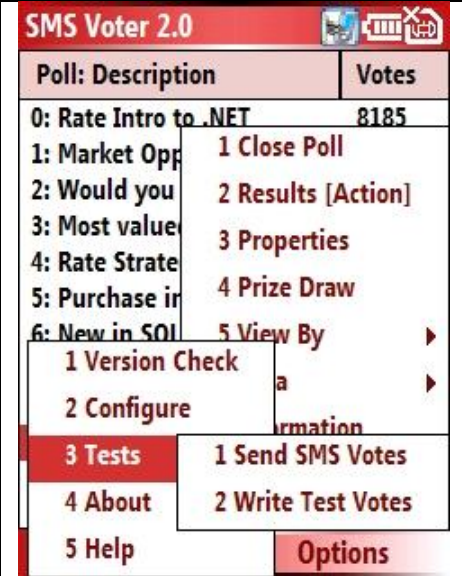


Test Control is useful to test polls that you have set up. By checking "Enable Test Buttons" you'll enable the "Tests" menu under the "SMS Voter" menu off the main "Options" menu. You can also set the phone number of the phone running the SMS Voter application that you can send test votes to – this is most likely the same phone that you are running SMS Voter on!!

Testing a Poll

If you have "[Enabled Test Buttons](#)" then the "Tests" menu option on the "SMS Voter" menu will be enabled. There are two types of test you can do.

- 1) Send test votes to the phone number that you specified in the Configuration section.
- 2) Write test votes directly to the poll database. This can be useful to check the performance of your phone. You can expect something in the order or 40 to 100 votes written per second with this test.



Appendix

System Requirements

Software

The following software needs to be installed on your device and is included in the installer you downloaded.

- 1) SMS Voter 2.0
- 2) Microsoft Compact Framework V2 SP1
- 3) SQL Server 2005 Mobile Edition

Hardware

- 1) [Windows Mobile 5.0 \(or greater\) Smartphone](#)
- 2) [Windows Mobile 5.0 \(or greater\) Phone PC Phone](#)

Installation

Windows Mobile 5.0 Smartphone Installation

The main memory on a Smartphone is quite limited so to install this application on to a Smartphone you'll need to install a memory card in to your phone first.

- SMS Voter is small and can be installed in to the main memory on the phone or on to the Storage Card.
- When installing the Compact Framework be sure to select the Storage Card when installing it on the device.
 - When the installation of the Compact Framework V2 completes it will ask you to reset the phone – select cancel and don't reset the phone just yet. Install SQL Server 2005 Mobile Edition then restart your phone by powering off then on again.
- When installing SQL Server 2005 Mobile Edition you need to ensure you install it on to the Storage Card as well.

Windows Mobile 5.0 Pocket PC Phone Edition Installation

Pocket PC Phones typically have quite a bit of main storage so you can install the Compact Framework, SQL Server 2005 Mobile Edition and SMS Voter 2.0 on to the devices main memory. You'll need approximately 10 MB of free memory.

When the installation of the Compact Framework V2 completes it will ask you to reset the phone – select cancel and don't reset the phone. Install SQL Server 2005 Mobile Edition then restart your phone by powering off then on again.

Technology Overview

SMS Voter 2.0 is built on the .NET Compact Framework V2.0 using Visual Studio 2005.

Poll vote data is stored in SQL Server 2005 Mobile Edition

Performance

The gating factor for this application is the speed with which your Network Provider can forward SMS Text votes to the phone running SMS Voter. Version 1.0 of this application was used at TechEd 2005 Australia and at an internal Microsoft company conference and was easily processing 200 to 300 messages over a 5 minute period. The database performance has been tuned to support between 40 and a 100 votes per second, this is easily enough to ensure fast processing and storage of large polls that you may wish to run.